

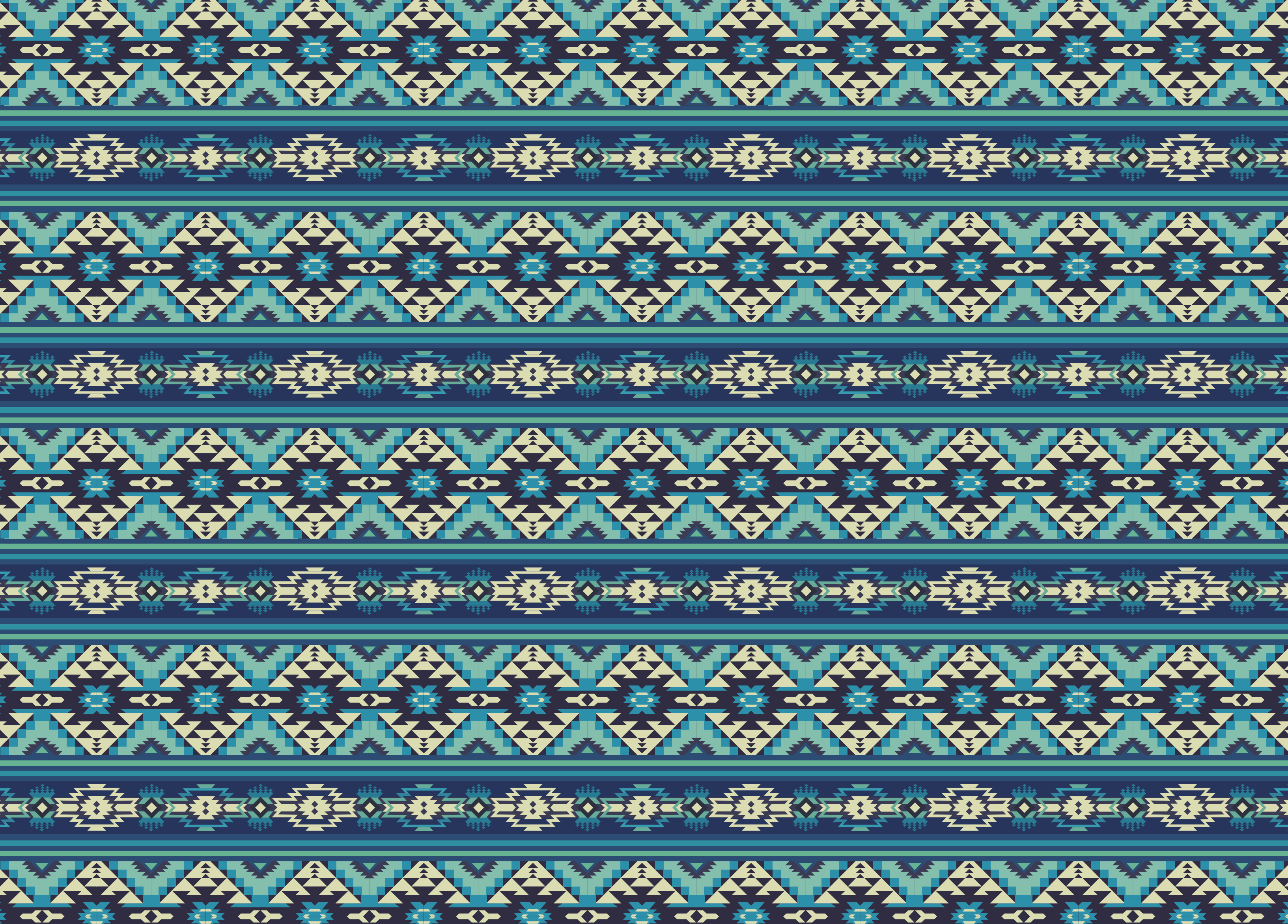


DENIM

BOOK 2408

DENIM

2024



good clothes
open all doors

DENIM



— MAKE CUSTOMIZATION EASIER —





ZGA0024

92.5%CTN 6.5%T-400 1%LYCRA 9.5OZ



ZGA0025

92.5%CTN 6.5%T-400 1%LYCRA 9.5OZ



ZGA0026

92.5%CTN 6.5%T-400 1%LYCRA 9.5OZ



DENIM



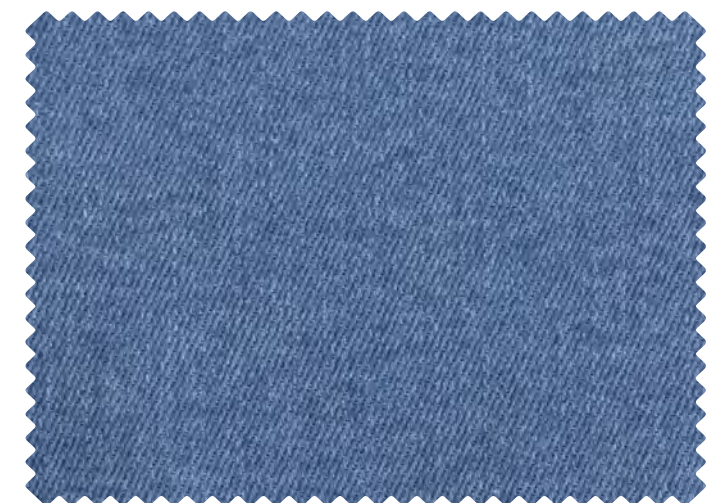
ZGA0010

86.2%CTN 11%POLY 2.8%SPX 8.25OZ



ZGA0009

86.2%CTN 11%POLY 2.8%SPX 8.25OZ



ZGA0011

86.2%CTN 11%POLY 2.8%SPX 8.25OZ

DENIM



ZGA0017

98.4%CTN 1.6%LYCRA 10.8 OZ



ZGA0018

98.4%CTN 1.6%LYCRA 10.8 OZ



ZGA0016

98.4%CTN 1.6%LYCRA 10.8 OZ



ZGA0019

98.4%CTN 1.6%LYCRA 10.8 OZ

DENIM



ZGA0012

92%CTN 7%T-400 1%LYCRA 9.25 OZ



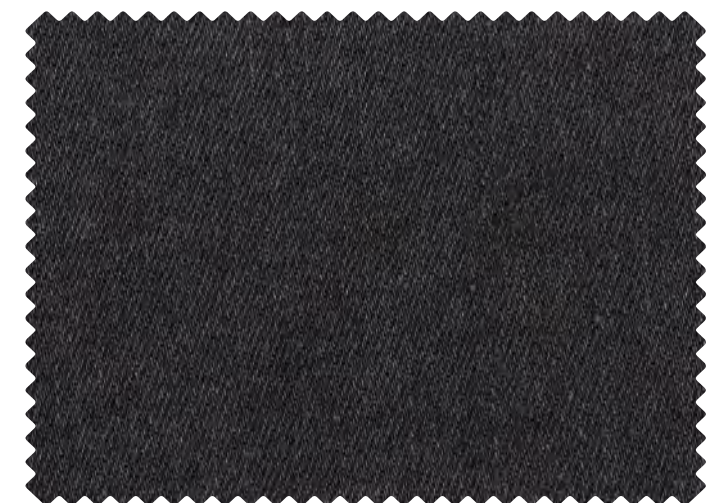
ZGA0014

92%CTN 7%T-400 1%LYCRA 9.25 OZ



ZGA0013

92%CTN 7%T-400 1%LYCRA 9.25 OZ



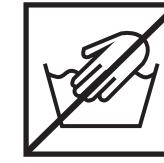
ZGA0015

92%CTN 7%T-400 1%LYCRA 9.25 OZ

DENIM



Color Fixation



Waterless Wash



ZGA0027

65%CTN 32%POLY 3%SPX

11.5OZ



WIDE-LEG PANTS

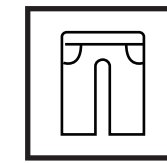


DENIM



ZGA0004

84.5%CTN 15.5%HEMP 8.25OZ



WIDE-LEG PANTS



ZGA0002

84.5%CTN 15.5%HEMP 8.25OZ



ZGA0001

84.5%CTN 15.5%HEMP 8.25OZ



ZGA0003

84.5%CTN 15.5%HEMP 8.25OZ

SHIRT

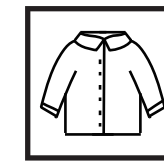


DENIM



ZGA0021

100%TENCEL 60Z



SHIRT



ZGA0022

100%TENCEL 60Z



ZGA0020

100%TENCEL 60Z



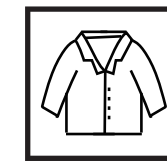
ZGA0023

100%TENCEL 60Z

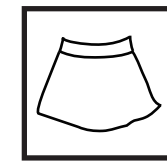
JACKET



DENIM



JACKET



SKIRT

ZGA0006

100%CTN 13.5 OZ



ZGA0007

100%CTN 13.5 OZ



ZGA0005

100%CTN 13.5 OZ



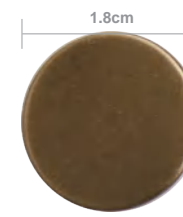
ZGA0008

100%CTN 13.5 OZ

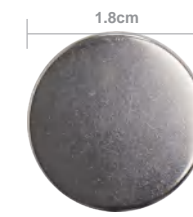
CUSTOMIZATION



HOOK-AND-EYE BUTTON



GKC01



GKC02



GKC04



GKC05



GKC06



GKC16



GKC20



GKC48



GKC21



GKC12



GKC13



GKC14



GKC40



GKC41



GKC42



GKC51



GKC49

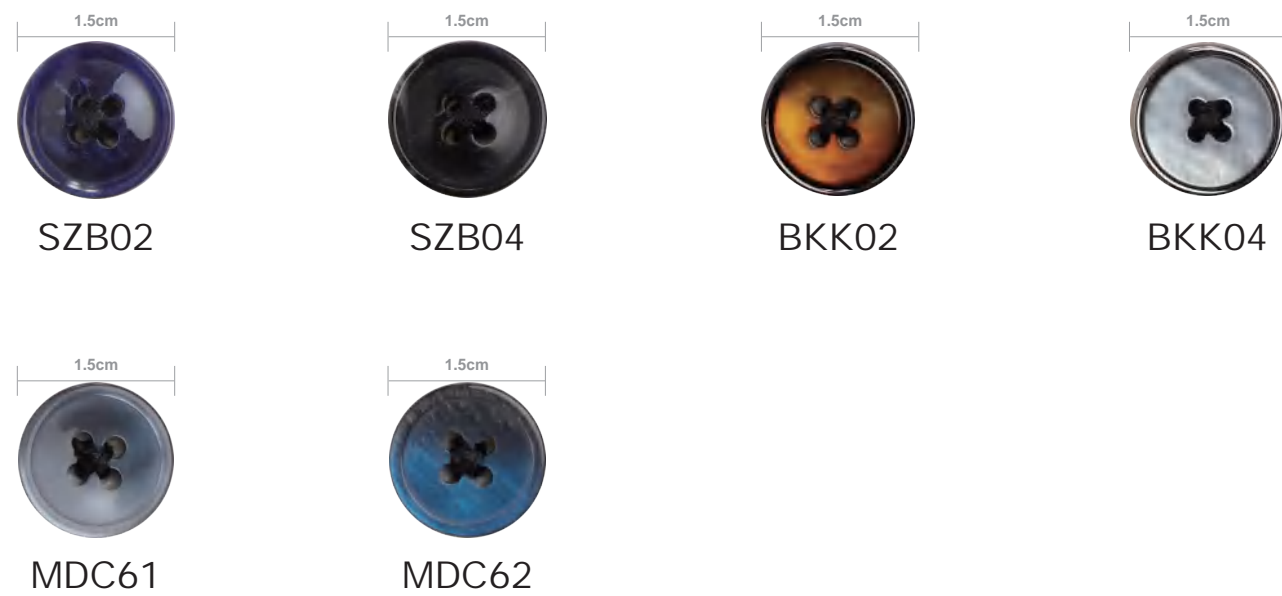


GKC50

RIVET



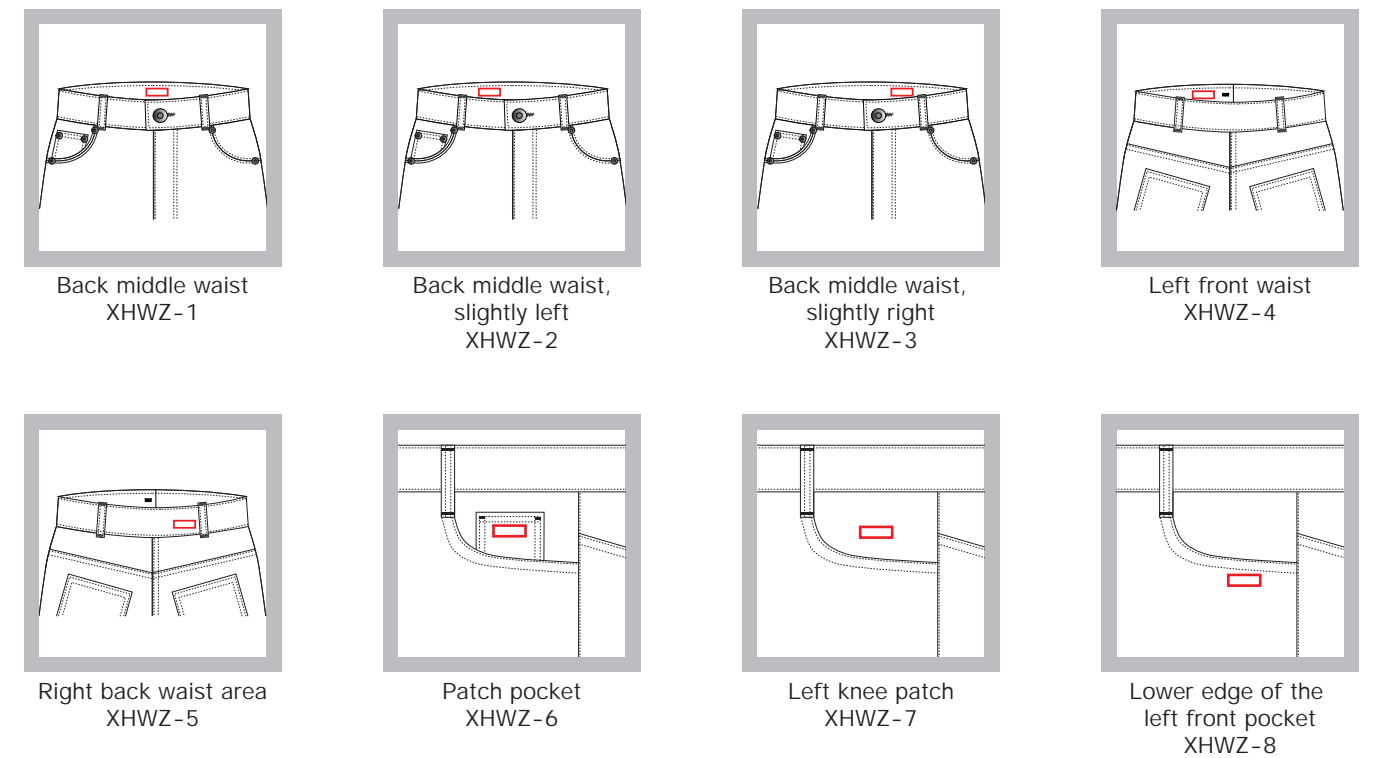
SHIRT BUTTON



LINE



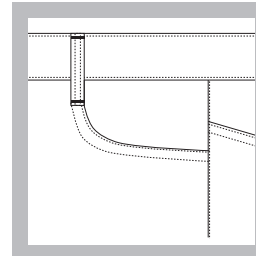
EMBROIDERY POSITION



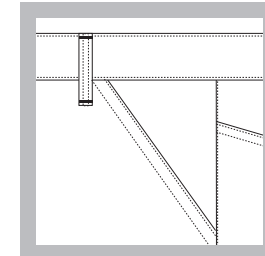


POCKET

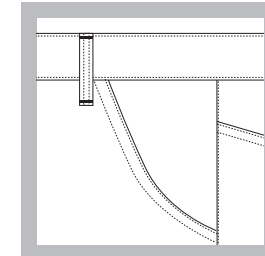
Front pocket:



Crescent-shaped pocket
C005

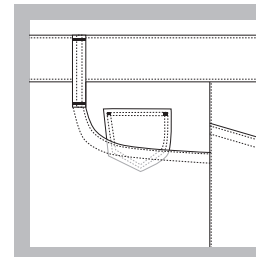


Slant pocket
C004

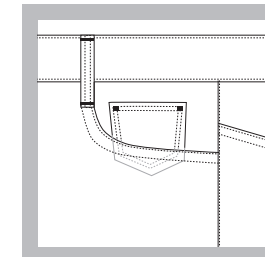


Long arc-shaped pocket
C006

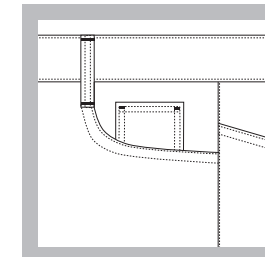
Patch pocket :



Irregular-shaped patch
pocket
A001

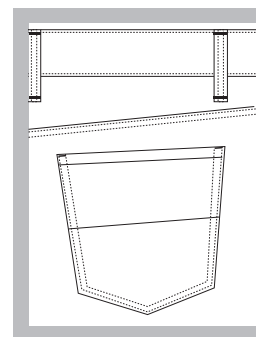


Patch pentagon-shaped
pocket with straight opening
A002

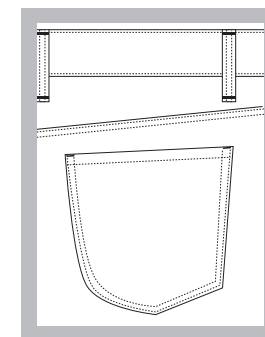


Patch square pocket
with straight opening
A003

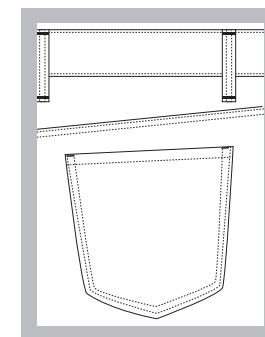
Back pocket:



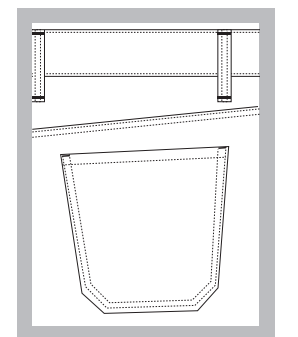
Patch pocket
B001



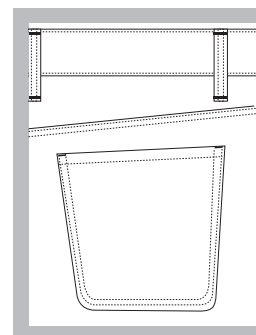
Irregular pocket
B002



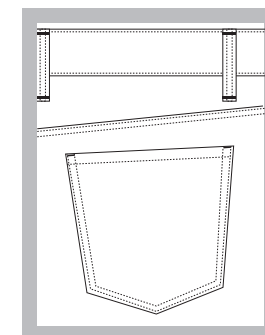
Flat triangular pocket
B003



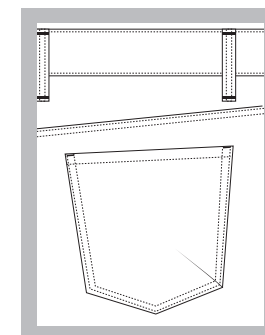
Flat hexagonal pocket
B004



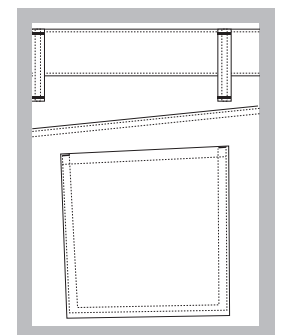
Flat rounded pocket
B005



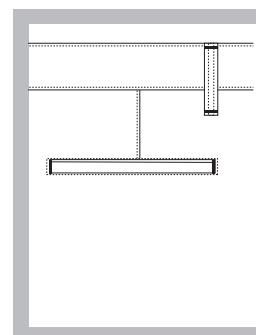
Flat pentagonal pocket
B006



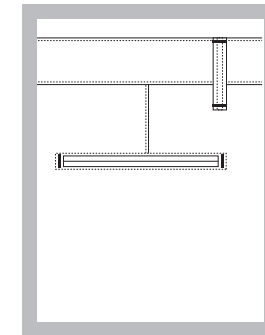
Single-welt exterior pocket
B007



Flat square pocket
B008



Single-welt pocket
B009



Double-welt pocket
B010

WASHING STYLES



Light handwork
SXNZK-1



Normal manual
SXNZK-2



Heavy manual work
SXNZK-3



Light handwork
SXJK-1



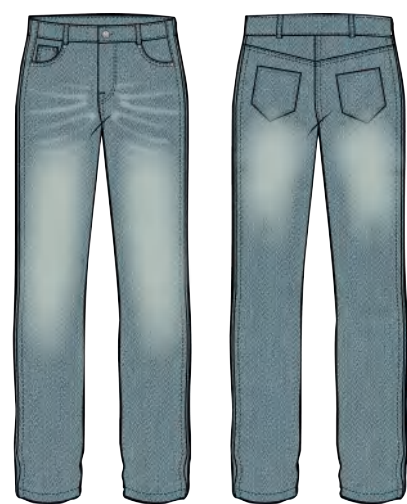
Normal manual
SXJK-2



Heavy manual work
SXJK-3



Wipe with only one hand
without whiskers
SXNZK-4



Chromatography
SXNZK-5



Fried salt
SXNZK-6



Light handwork
SXCY-1



Normal manual
SXCY-2



Heavy manual work
SXCY-3



enim

enim

